

PCLinq2 Hi-Speed USB Bridge-Network Cable

Quick Network Setup Guide

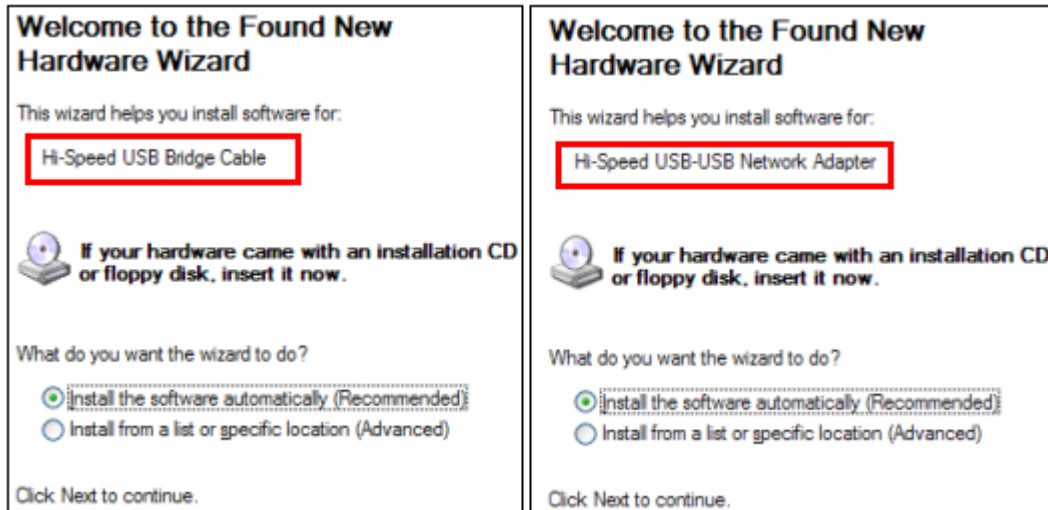
For Windows 98/ME/2000/XP

Congratulations!

Congratulations for installing the PCLinq2 Hi-Speed USB Bridge-Network Cable. This Quick Network Setup guide is only for explaining the network device mode installation of the cable. For information on how to use the data bridge device mode, please refer to the PCLinq2 Data Bridge User's Manual.

Driver Installation

1. Run the Hi-Speed USB Bridge-Network Cable Setup program.
2. When Setup is complete, plug in the USB Bridge-Network cable to the USB port of your computer.
3. Depending on the default device mode of your cable or the last saved device mode, the New Hardware Wizard will detect the "Hi-Speed USB-USB Network Adapter" or "Hi-Speed USB Bridge Cable" device and will prompt you to install the software. Click "Install the software automatically" and Next button to continue.



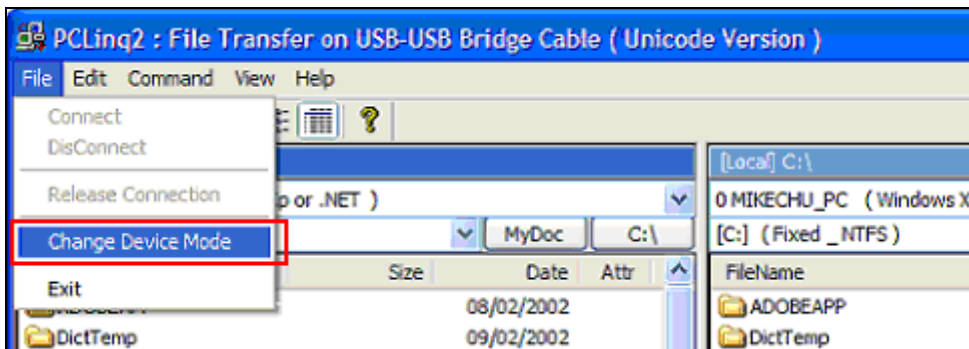
4. Windows will detect that the software you are installing has not yet passed Windows Logo testing. Click "Continue Anyway".
5. Wait until the New Hardware Wizard finishes installing the software. Click the Finish button if installation is complete.
6. To install the drivers for the other device, you need first to change the device mode using the PCLinq2 utility program. Refer to the next section.

Changing Device Mode

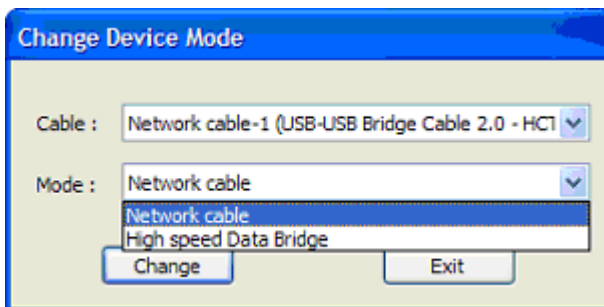
The PCLinq2 utility program allows you to easily change between the network mode and the data bridge mode.

To switch between device modes, simply follow these steps:

1. Double-click the PCLinq2 program. Click File-Change Device Mode.



2. The Change Device Mode dialog box will appear. Select the mode you want and click the Change button.



3. If you select Network cable, Windows will detect the Hi-Speed USB-USB Network Adapter and will prompt you automatically to install the software.

Note: The last device mode will be stored in your cable and Windows will detect that device mode (data bridge or network) when you unplug and re-plug the cable. If driver is still not installed, Windows will prompt you to install.

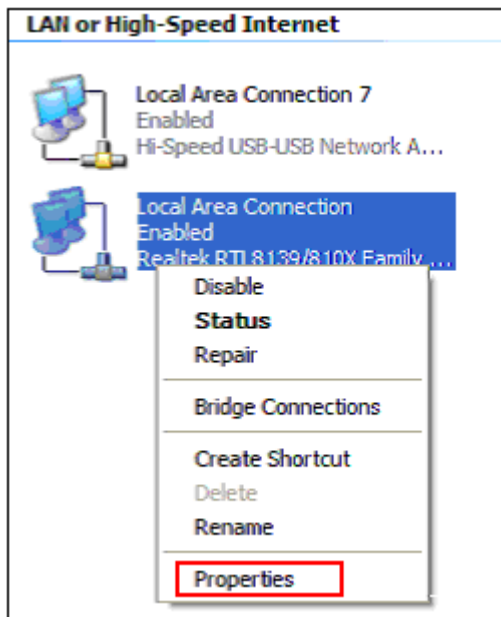
Internet Connection Sharing

In order to allow network and Internet access to the remote client PC (without built-in network adapter), you need to first setup the Windows Internet Connection Sharing in your host computer (with built-in network adapter).

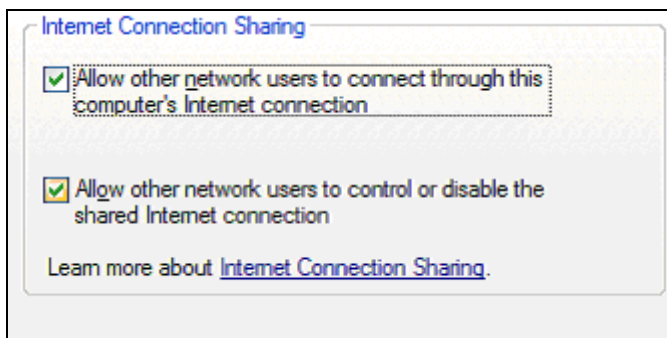
Note: *You only need to do this additional setup for the computer with the built-in network access. After you finished and restarted Windows, you can plug the other end of the cable to the remote client computer.*

Windows XP/2000

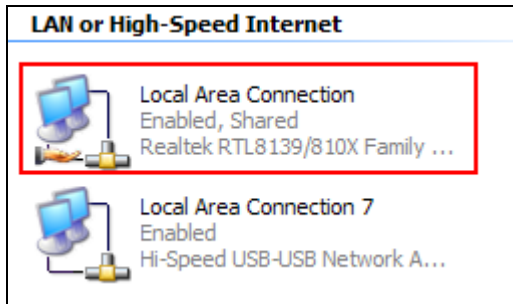
1. After you have finished installing the software, you now need to setup the Internet Connection Sharing for the computer with the built-in network access. Click Start-Control Panel-Network Connections.
2. You will find two network devices – one is the Hi-Speed USB-USB Network Adapter and the other one is your built-in network adapter. Right-click the built-in network adapter and click Properties.



3. Inside the Properties window, click the Advanced folder tab. On the Internet Connection Sharing section, click or enable to allow other network users to connect through this computer's Internet connection. Click OK when done.



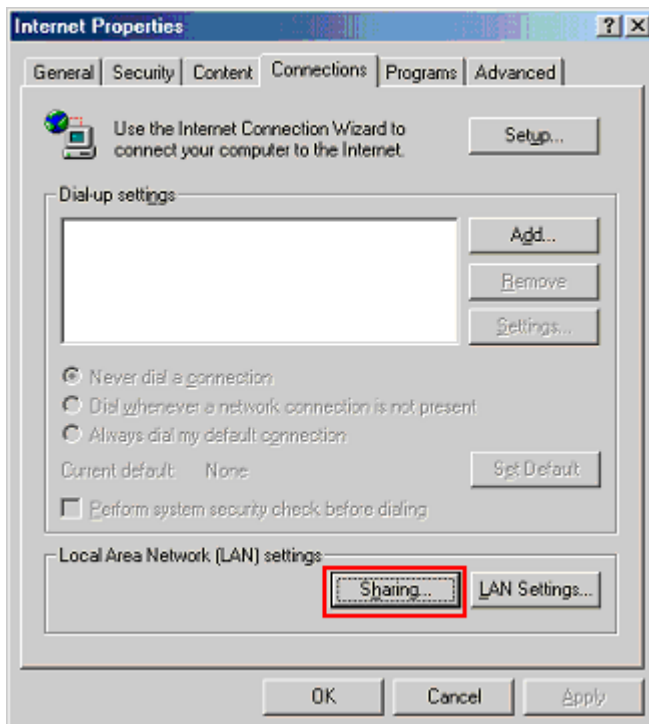
4. Check afterwards if your built-in network adapter is already shared.



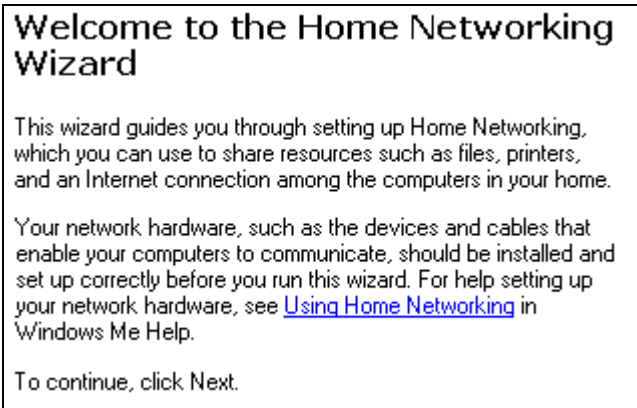
5. Reboot Windows to activate the settings. After Windows has started properly, plug the other end of the USB Bridge-Network cable to the remote computer. Make sure you have run the Setup program on the remote computer as well. Note that you don't need to do the above additional settings for the remote computer.
6. Check the remote client computer if the host computer is detected and if the network and Internet access is functioning.

Windows ME

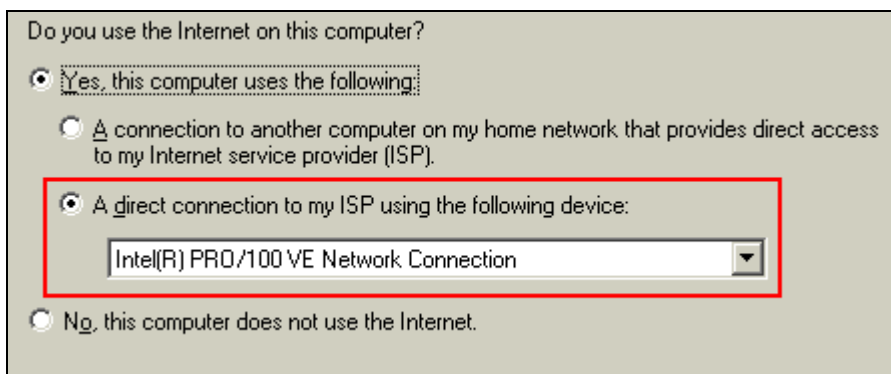
1. Click Start-Control Panel and double-click on the Internet Options.
2. Go to the Connections folder tab of Internet Properties and click on the Sharing button.



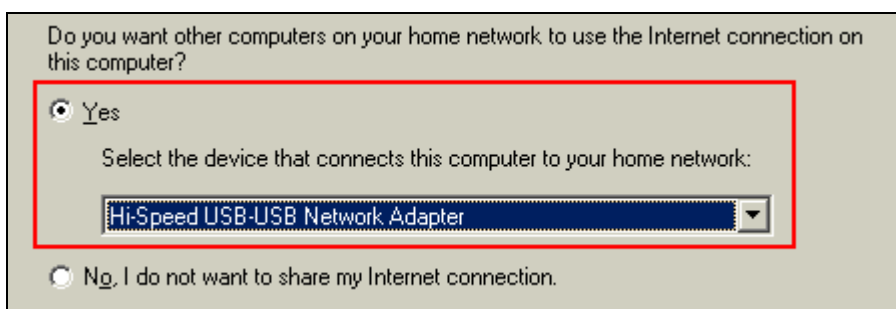
- The Home Networking Wizard will then appear to start the network sharing. Click Next to continue.



- The Home Networking Wizard will then prompt you if you use the Internet on your host computer. Click Yes and select the built-in network adapter that has a direct connection to Internet.

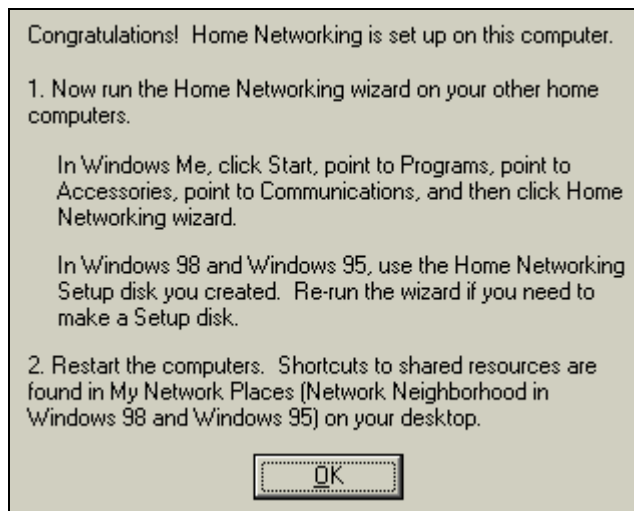


- The Home Networking Wizard will then prompt you if you want other computers to use the Internet connection on your host computer. Click Yes and select the "Hi-Speed USB-USB Network Adapter" that connects your host computer to the remote computer. Click Next to continue.



- Follow the instructions on the succeeding dialog boxes to complete the setup. When asked if you want to create a network setup disk, you can skip that option. Click Finish when the Home Networking Wizard is complete.
- After you have completed the Internet Connection Sharing, Windows will prompt you to restart your computer. Click Yes to restart.

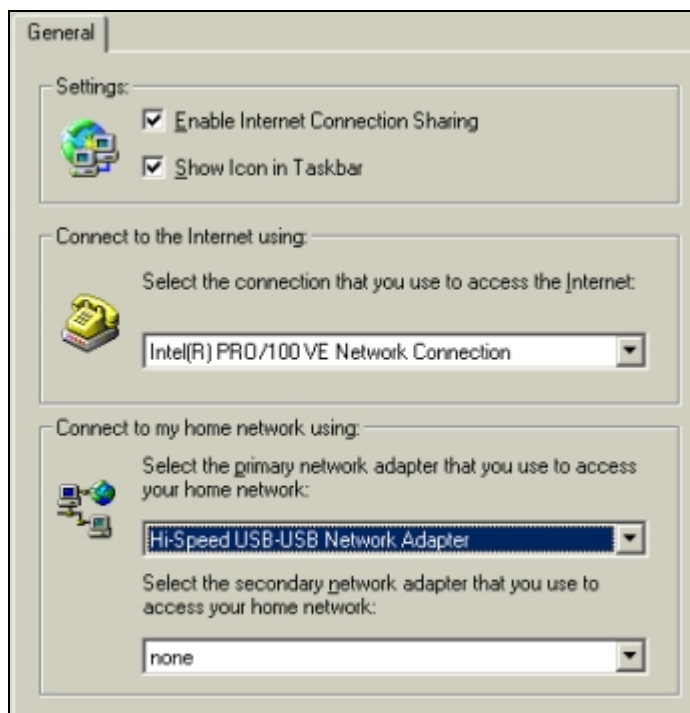
8. After Windows restarts, the Home Networking Wizard will prompt you that you have successfully completed installation.



9. Check also the Windows taskbar if the Internet Connection Sharing icon appears. You can right-click on the icon and click Options.



10. Inside the Properties window, you can see the Internet Connection Sharing settings of your host computer.

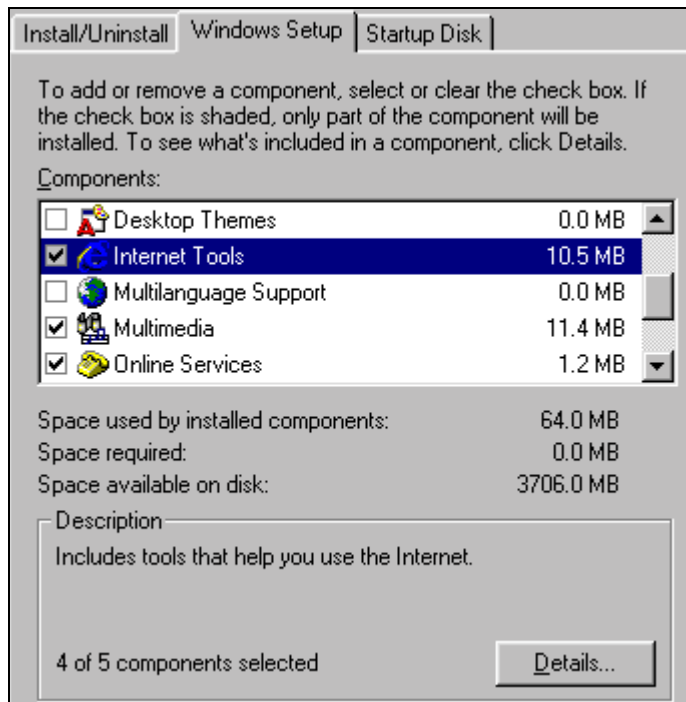


11. Plug the other end of the cable to the remote computer. Make sure you have run the Setup program on the remote computer as well. Note that you don't need to do the above additional settings for the remote computer.

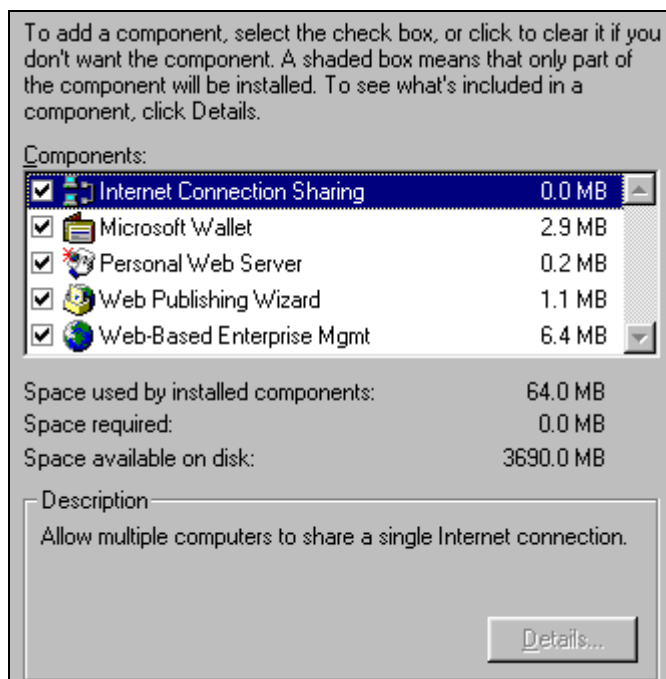
Windows 98SE

For Windows 98, you need first to install the Internet Connection Sharing option.

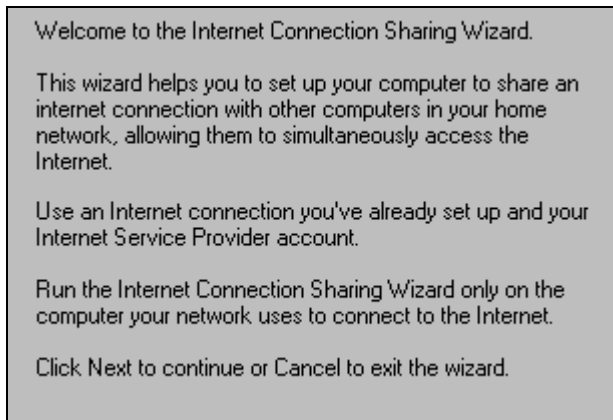
1. Click Start-Control Panel and double-click on the Add/Remove Programs. Go to the Windows Setup folder tab and double-click on Internet Tools.



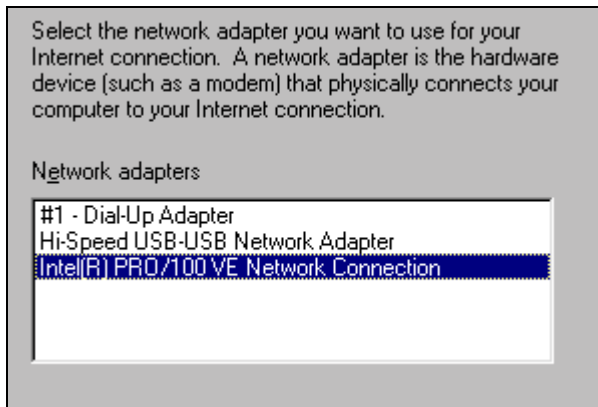
2. Click to add the Internet Connection Sharing component and insert the Windows 98 CD-ROM.



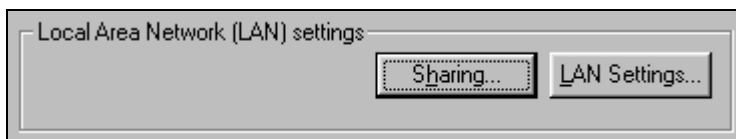
3. After you have installed the Internet Connection Sharing component, the Wizard dialog box will appear to start setup.



4. Next, select the built-in network adapter that physically connects the host computer to the Internet.



5. Follow the instructions on the succeeding dialog boxes to complete the setup. When asked if you want to create a configuration disk, you can skip that option. Click Finish when the Wizard is complete. After you have completed the Internet Connection Sharing, Windows will prompt you to restart your computer. Click Yes to restart.
6. To enable the Internet Connection Sharing icon on the Windows taskbar, go to the Internet Properties and click the Sharing button.



7. Click on the Show Icon in Taskbar.

